



COURTENELL

Issue Number 98

March 2012

Published bi-monthly

Your Safety Matters

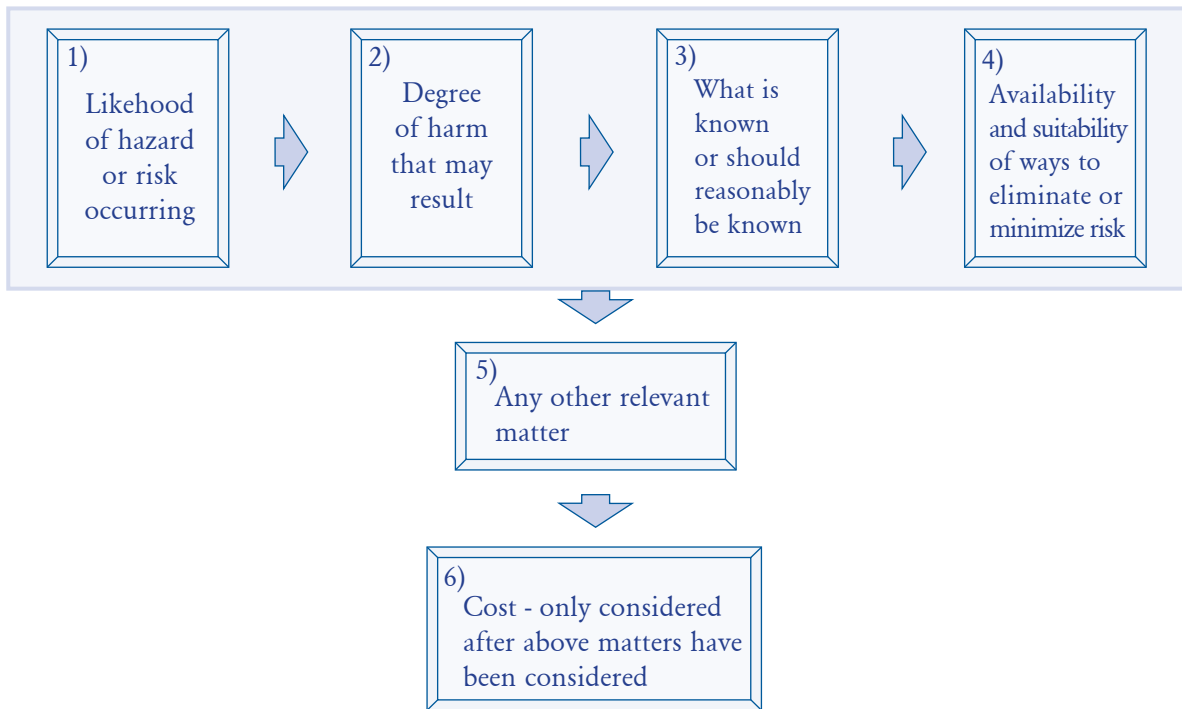
This information letter is distributed to those people who are ensuring that their workplace is safe and healthy. This includes members of WHS Committees, WHS Representatives, Safety Officers, Supervisors, Managers and Directors. "Your Safety Matters" (formerly "Committee Member") is a free information letter which has been distributed since 1996.

"Reasonably Practicable"

The PCBU has a duty to ensure, so far as reasonably practicable, the health & safety of workers (section 18 of WHS Act 2011):

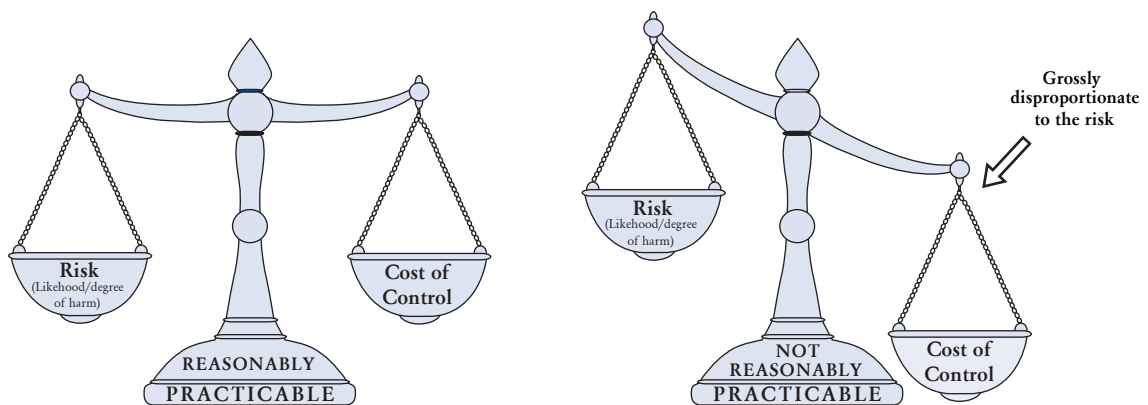
How to determine what is reasonably practicable

Consider all the matters below:



Weigh up "the cost associated with the available ways of eliminating or minimizing the risk" Section 18 (e) WHS Act 2011

(Risk is the possibility that harm (death, injury or illness) might occur when exposed to a hazard.)



This publication provides general information about whs. It is not a legal opinion and does not represent a comprehensive statement of the law to be applied to a particular problem.

Brought to you by Courtenell Pty Ltd, Work Health & Safety Training Specialists.

ABN 42164393628 ~ Fax : 02 9516 3644 ~ Email : train@courtenell.com.au ~ Website : www.courtenell.com.au

Phone : 02 9516 1499 ~ *If you need any more information, you can contact us by phone, email or by fax anytime.*



COURTENELL

Issue Number 20

April 2012

Published bi-monthly

Did You See..?

This information is distributed as and when something significant happens in the WHS world. We briefly describe what it is and provide you with a link to where you can get more information. Did You See is also sent out as an e-newsletter.

Guide for Major Hazard Facilities

Safety Assessment has been issued by SafeWork Australia. It is designed to assist operators of major hazard facilities (MHFs) to prepare and conduct a safety assessment in accordance with the Work Health and Safety Regulations.

www.worksafe.vic.gov.au/wps/wcm/connect/wsinternet/WorkSafe/Home/Safety+and+Prevention/Your+Industry/Major+Hazard+Facilities/

Application for the registration of plant design

Plant design: This application form is used to register plant design, including alteration of plant design with WorkCover NSW pursuant to the Work Health and Safety Regulation 2011.

www.workcover.nsw.gov.au/formspublications/publications/pages/applicationregistrationplantdesign.aspx

Recognition of general construction induction training cards

A fact sheet has been issued by WorkCover NSW. It outlines the recognition of interstate General Construction Induction Training cards.

www.workcover.nsw.gov.au/formspublications/publications/Pages/recognitionconstructioninductioncards.aspx



Working with forklifts

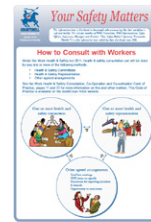
This safety alert reminds forklift users of the inherent dangers of using a forklift.

www.workcover.nsw.gov.au/formspublications/publications/Documents/working-forklifts-3588.pdf

“Your Safety Matters” newsletter, Issue 97

This gives a graphic picture of “How to Consult with Workers” under the Work Health & Safety Act 2011.

www.courtenell.com.au/97.pdf



This publication provides general information about whs. It is not a legal opinion and does not represent a comprehensive statement of the law to be applied to a particular problem.

Brought to you by Courtenell Pty Ltd, Work Health & Safety Training Specialists.
ABN 42164393628 ~ Fax : 02 9516 3644 ~ Email : train@courtenell.com.au ~ Website : www.courtenell.com.au
Phone : 02 9516 1499 ~ *If you need any more information, you can contact us by phone, email or by fax anytime.*